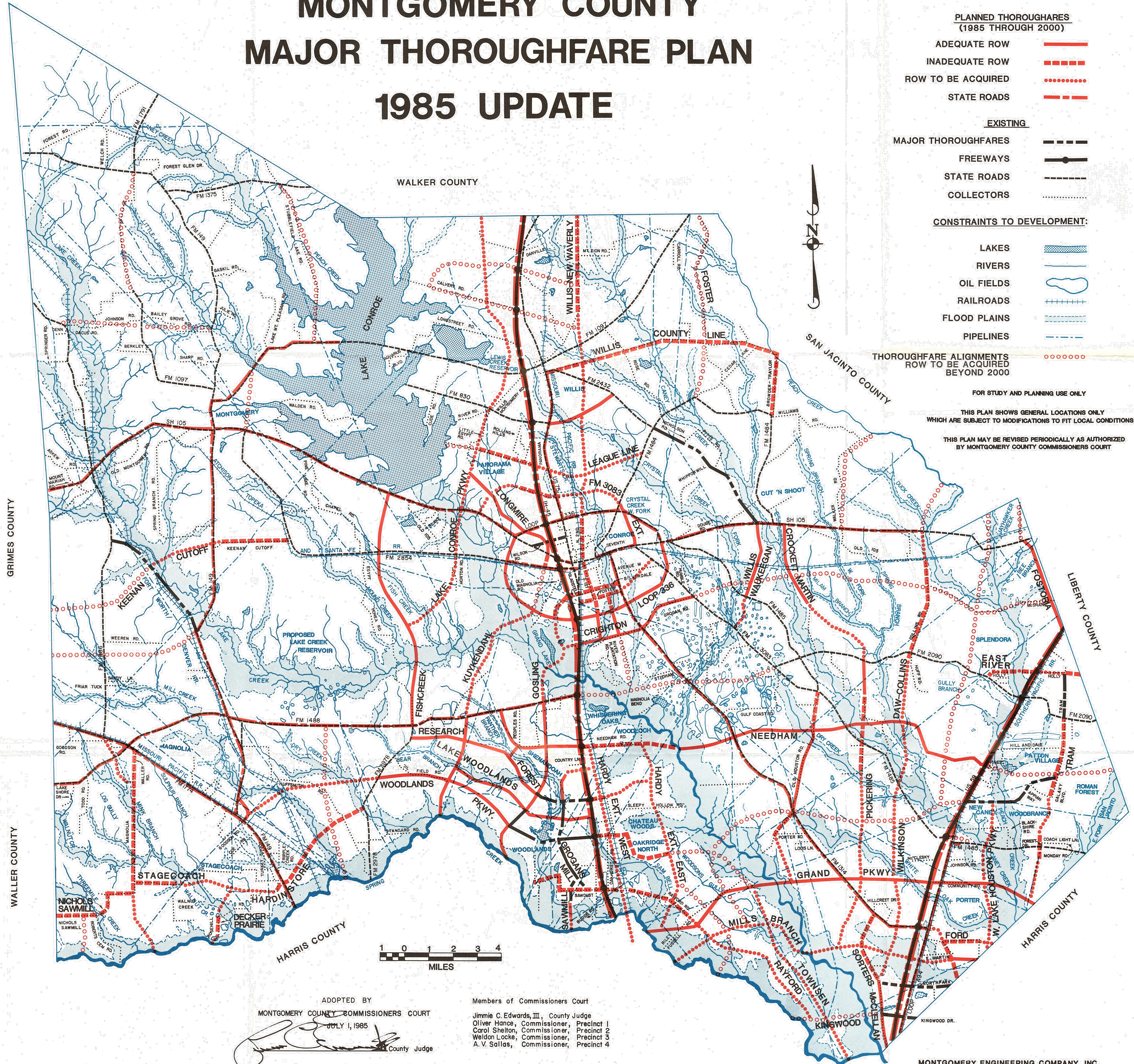


MONTGOMERY COUNTY MAJOR THOROUGHFARE PLAN 1985 UPDATE

LEGEND

- PLANNED THOROUGHFARES
(1985 THROUGH 2000)**
- ADEQUATE ROW
 - INADEQUATE ROW
 - ROW TO BE ACQUIRED
 - STATE ROADS
- EXISTING**
- MAJOR THOROUGHFARES
 - FREWAYS
 - STATE ROADS
 - COLLECTORS
- CONSTRAINTS TO DEVELOPMENT:**
- LAKES
 - RIVERS
 - OIL FIELDS
 - RAILROADS
 - FLOOD PLAINS
 - PIPELINES
- THOROUGHFARE ALIGNMENTS
ROW TO BE ACQUIRED
BEYOND 2000**
-

FOR STUDY AND PLANNING USE ONLY
THIS PLAN SHOWS GENERAL LOCATIONS ONLY
WHICH ARE SUBJECT TO MODIFICATIONS TO FIT LOCAL CONDITIONS
THIS PLAN MAY BE REVISED PERIODICALLY AS AUTHORIZED
BY MONTGOMERY COUNTY COMMISSIONERS COURT



ADOPTED BY
MONTGOMERY COUNTY COMMISSIONERS COURT
JULY 1, 1985

Members of Commissioners Court
Jimmie C. Edwards, III, County Judge
Oliver Hance, Commissioner, Precinct 1
Carol Shelton, Commissioner, Precinct 2
Weldon Locke, Commissioner, Precinct 3
A. V. Sallas, Commissioner, Precinct 4

PREPARED FOR: HOUSTON-GALVESTON AREA COUNCIL AND MONTGOMERY COUNTY COMMISSIONERS COURT

MONTGOMERY ENGINEERING COMPANY, INC.
HOWARD NEEDLES TAMMEN & BERGENDOFF
BARRY M. GOODMAN ASSOCIATES, INC. 1985